

GP3000 Series DIO Interface Installation Guide

Caution

Be sure to read the "Warning/Caution Information" on the attached sheet before using the product.

CAUTION

This manual describes the part names and general specifications related to the DIO I/F included with the DIO board type unit of the GP3000 series, as well as the wiring to the DIO connector. Before using the DIO connector, be sure to read this Installation Guide in conjunction with the attached GP3000 Series' Installation Guide.

Package Contents

- (1) Installation Guide (1) <This Guide>
- (2) DIO Connector (1)



This unit has been carefully packed, with special attention to quality. However, should you find anything damaged or missing, please contact your local GP distributor immediately.

About the Manual

For the detailed information on GP3000 series, refer to the following manual.

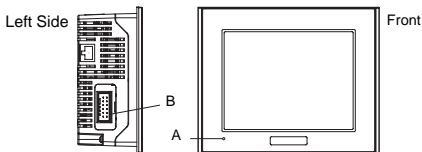
- GP3000 Series Hardware Manual
- Maintenance/Troubleshooting Guide

The manuals can be selected from the help menu of GP-Pro EX or downloaded from Pro-face Home Page.

URL

<http://www.pro-face.com/>

Part Names and Functions



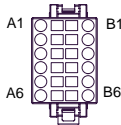
(The figure shows AGP-3300T unit)

Name		Description			
A	Status LED	Color	Indicator	Operation Mode (Drawing)	Logic execution mode (when logic is enabled)
				OFFLINE	-
		Green	ON	In operation	RUN
			Flashing	In operation	STOP
		Red	ON	When power is turned on.	
			Flashing	In operation	Major Error
		Orange	ON	Backlight burnout	
Flashing	During software startup				
(The logic program is disabled in the AGP-3302B/3301L/3301S. The Status LED turns on only in Operation Mode (Drawing).)					
B	DIO Interface	Used to connect the external I/O device.			

DIO Interface (Connector)

IMPORTANT

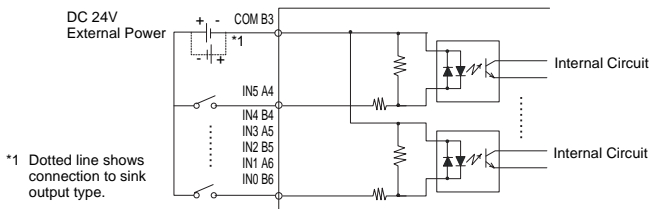
- When preparing the cable to connect the wiring, check the pin numbers inscribed on the DIO Connector.

Applicable connector	1-1871940-6 <Tyco Electronics AMP.>			
Pin Arrangement	Pin No.	Signal Name	Pin No.	Signal Name
 (Cable connection side)	A1	0V	B1	+24V
	A2	OUT1	B2	OUT0
	A3	NC	B3	COM
	A4	IN5	B4	IN4
	A5	IN3	B5	IN2
	A6	IN1	B6	IN0

Input Specifications

Rated Voltage	DC 24V	
Maximum Allowable Voltage	DC 28.8V	
Input Method	Source/Sink Input	
Rated Current	5.7 mA (DC24V)	
Input Resistance	4.2 kΩ	
Operation Range	ON Voltage	DC 15V or more
	OFF Voltage	DC 5V or less
Input Delay Time	OFF to ON	1.5 ms or less
	ON to OFF	1.5 ms or less
Common Lines	1	
Common Design	6 points/1 common line	
External Connection	12-pin connector (used with Output section)	
Input Points	6	
Input Signal Display	No LED indicators	
Status Display	None	
Isolation Method	Photocoupler Isolation	
External Power Supply	For Signal: DC 24V	

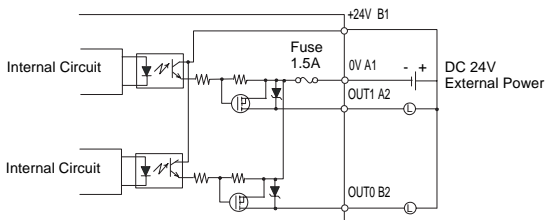
Input Circuit



■ Output Specifications (Sink type)

Rated Voltage	DC 24V	
Rated Voltage Range	DC 20.4V to DC 28.8V	
Output Method	Sink Output	
Maximum Load Voltage	0.2A /point, 0.4A /common	
Output Voltage Drop	1.5V or less	
Output Delay Time	OFF to ON	1ms or less
	ON to OFF	1ms or less
Voltage Leakage (when OFF)	0.1mA or less	
Clamp Voltage	39V ± 1V	
Type of Output	Transistor Output	
Common Lines	1	
Common Design	2 points/1 common line	
External Connection	12-pin connector (also used for Input)	
Output Protection Type	Output is unprotected	
Internal Fuse	1.5A, 125V DIP fuse (not replaceable)	
Surge Control Circuit	Zener diode	
Output Points	2	
Output Signal Display	No LED indicators	
Status Display Element	None	
Isolation Method	Photocoupler Isolation	
External Power Supply	DC 24V	

◆ Output Circuit (Sink type)



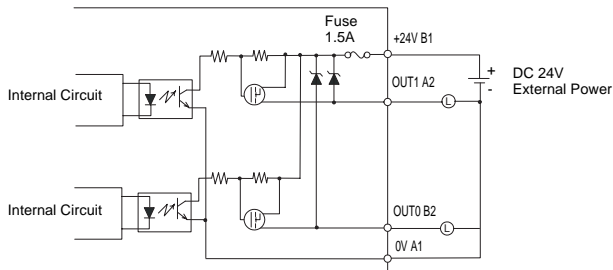
NOTE

- Since the output terminals are not electrically protected, an output line might be short-circuited or a connection fault might damage the GP unit. Please install an applicable fuse to prevent an overload in the circuit, if necessary.

■ Output Specifications (Source type)

Rated Voltage	DC 24V	
Rated Voltage Range	DC 20.4V to DC 28.8V	
Output Method	Source Output	
Maximum Load Voltage	0.2A /point, 0.4A /common	
Output Voltage Drop	DC 1.5V or less	
Output Delay Time	OFF to ON	1ms or less
	ON to OFF	1ms or less
Voltage Leakage (when OFF)	0.1mA or less	
Clamp Voltage	39V ± 1V	
Type of Output	Transistor Output	
Common Lines	1	
Common Design	2 points/1 common line	
External Connection	12-pin connector (also used for Input)	
Output Protection Type	Output is unprotected	
Internal Fuse	1.5A, 125V DIP fuse (not replaceable)	
Surge Control Circuit	Zener diode	
Output Points	2	
Output Signal Display	No LED indicators	
Status Display Element	None	
Isolation Method	Photocoupler Isolation	
External Power Supply	DC 24V	

◆ Output Circuit (Source type)



NOTE

- Since the output terminals are not electrically protected, an output line might be short-circuited or a connection fault might damage the GP unit. Please install an applicable fuse to prevent an overload in the circuit, if necessary.

Installations

1. Wiring to the DIO Connector

IMPORTANT

- Be sure to remove the DIO Connector from the GP unit prior to starting wiring. Failure to do so may cause an electric shock.

■ Items Required to Wire Connectors Screwdriver

Recommended type: 1891348-1 <Tyco Electronics AMP.>

If another manufacturer is used, be sure the part has the following dimensions:

point depth: 1.5mm [0.06in.]

point height: 2.4mm [0.09in.]

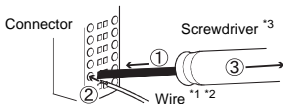
Point shape should be DIN5264A, and meet Security Standard DN EN60900.

Also, the screwdriver's tip should be flat as indicated in order to access the narrow hole of the connector:



- (1) Insert the screwdriver into the square-shaped hole.
This will open the wire's round-shaped hole.
- (2) Hold the screwdriver and insert the wire into the wire's round-shaped hole.
- (3) Take out the screwdriver from the square-shaped hole.
The round-shaped hole will then close, and the wire will be held securely in place.
To remove the wire, re-insert the screwdriver into the square-shaped hole

and when the wire's spring clamp releases, pull the wire out.



- (4) Insert the wired DIO connector into the DIO I/F of the GP unit.

*1 Wire should be AWG24 to AWG18 thick, and twisted.

Applicable wire sizes are UL1015 and UL1007.

*2 Be sure to strip at least 7.0mm [0.28in.] of cover from the wire.

*3 Do not rotate the point of the screwdriver inside the square-shaped opening. It may cause a malfunction.

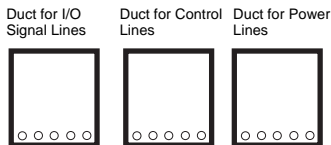
IMPORTANT

- Be sure to strip only the amount of cover required. If too much cover is removed, the end wires may short against each other, or against an electrode, which can create an electric shock. If not enough cover is removed the wire cannot carry a charge.
- Do not solder the wire itself. This could lead to a bad or poor contact.
- Insert each wire completely into its opening. Failure to do so can lead to a unit malfunction or short, either against wire filaments, or against an electrode.

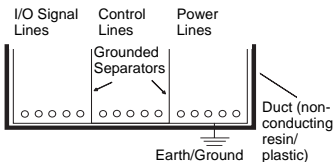
Wiring

1. Wiring Precautions

- To help prevent noise and interference problems, separate all control, communication and power lines by placing them in a separate ducts.



If different wires must be placed in the same duct, separate them with an earthed/grounded divider.



NOTE

- If the lines cannot be separated, use shielded lines and create a ground from the shield line.

IMPORTANT

- Use noise-reducing external wiring methods to increase overall system reliability.
- To prevent power surges or noise interference, use ducts to separate all DC I/O or current circuit wires from communication cables.
- To prevent malfunctions due to noise, communication cables must be wired separately from high-frequency lines and power lines such as high-voltage lines, high-current lines, and inverters.

UL/c-UL/CSA Approval

The following units are UL/c-UL/CSA listed products.

(UL File No.E220851, UL File No.E182139, CSA File No.219866)

Product Model No.	UL/c-UL/CSA Registration Model No.
AGP3300-L1-D24-D81K/D81C	3280007-03
AGP3300-S1-D24-D81K/D81C	3280007-02
AGP3300-T1-D24-D81K/D81C	3280007-01
AGP3400-T1-D24-D81K/D81C	3280035-01
AGP3400-S1-D24-D81K/D81C	3280035-02

These products conform to the following standards:

■ UL508

Industrial Control Equipment

■ UL1604

Electrical Equipment for Use in Class I and II, Division 2, and Class III Hazardous (classified) Locations

■ CSA-C22.2 No.14-M95

Industrial Control Equipment

■ CSA-C22.2 No.213-M1987

Non-Incendive Electrical Equipment for Use in Class I, Division 2 Hazardous Locations

The following units are UL/c-UL listed products. (UL File No.E171486, UL File No.E231702)

Product Model No.	UL/c-UL Registration Model No.
AGP3500-S1-AF-D81K/D81C	3280024-21
AGP3500-T1-AF-D81K/D81C	3280035-45
AGP3600-T1-AF-D81K/D81C	3280024-13

These products conform to the following standards:

■ **UL60950-1**

Information Technology Equipment
- Safety - Part 1

■ **UL1604**

Electrical Equipment for use in Class I and II, Division 2, and Class III Hazardous (classified) locations.

■ **CAN/CSA-C22.2 No.60950-1-03**
(c-UL approval)

Information Technology Equipment
- Safety - Part 1

■ **CSA-C22.2 No.213-M1987**
(c-UL approval)

Non-incendive Electrical Equipment for Use in Class I, Division 2 Hazardous Locations.

The following units are UL/c-UL/CSA listed products.

(UL File No.E220851, UL File No.E210412, CSA File No.219866)

Product Model No.	UL/c-UL/ CSA Registration Model No.
AGP3500-L1-D24-D81C	3280024-32
AGP3500-S1-D24-D81K/D81C	3280024-22
AGP3500-T1-D24-D81K/D81C	3280035-41
AGP3600-T1-D24-D81K/D81C	3280024-14

These products conform to the following standards:

■ **UL508**

Industrial Control Equipment

■ **UL1604**

Electrical Equipment for use in Class I and II, Division 2, and Class III Hazardous (classified) locations.

■ **CSA-C22.2 No.14-M95**

Industrial Control Equipment

■ **CSA-C22.2 No.213-M1987**

Non-Incendive Electrical Equipment for Use in Class I, Division 2 Hazardous Locations

<Cautions>

Be aware of the following items when building the GP into an end-use product:

- The GP unit's rear face is not approved as an enclosure. When building the GP unit into an end-use product, be sure to use an enclosure that satisfies standards as the end-use product's overall enclosure.
- The GP unit must be used indoors only.
- Install and operate the GP with its front panel facing outwards.
- If the GP is mounted so as to cool itself naturally, be sure to install it in a vertical panel. Also, it's recommended that the GP should be mounted at least 100mm away from any other adjacent structures or machine parts. The temperature must be checked on the final product in which the GP is installed.
- Serial Interface (COM2) is not Limited Power Source.

UL1604/CSA-C22.2, No.213 - Compliance and Handling Cautions

- (1) Power and input/output wiring must be in accordance with Class I, Division 2 wiring methods - Article 501-4(b) of the National Electrical Code, NFPA 70 within the United States, and in accordance with Section 18-152 of the Canadian Electrical Code for units installed within Canada.
- (2) Suitable for use in Class I, Division 2, Groups A, B, C, and D Hazardous Locations, or Non-Hazardous Locations.
- (3) **WARNING:** Explosion hazard- substitution of components may impair compliance to Class I, Division 2.
- (4) **WARNING:** Explosion hazard-when in hazardous locations, turn the power OFF before replacing or wiring modules.

- (5) **WARNING:** Explosion hazard-confirm that the power supply has been turned OFF before disconnecting equipment, or confirm that the location is not subject to the risk of explosion.
- (6) **WARNING:** Explosion hazard-do not disconnect equipment unless power has been switched off or the area is known to be Non-Hazardous.
- (7) In the case of use in Hazardous Locations, be sure to check that the externally connected unit and each interface have been fixed with screws and locked. In Hazardous Locations, it's impossible to insert or pull the cable from the applicable port. Be sure to check that the location is Non-Hazardous before inserting or pulling it.

CE Marking

The following units are CE marked products complying with the EMC Directive.

(EN55011 Class A, EN61000-6-2)

- AGP3300-L1-D24-D81K/D81C
- AGP3300-S1-D24-D81K/D81C
- AGP3300-T1-D24-D81K/D81C
- AGP3400-S1-D24-D81K/D81C
- AGP3400-T1-D24-D81K/D81C
- AGP3500-L1-D24-D81C
- AGP3500-S1-D24-D81K/D81C
- AGP3500-T1-D24-D81K/D81C
- AGP3600-T1-D24-D81K/D81C

The following units are CE marked products complying with both the EMC Directive and low-voltage directive.

(EN55011 Class A, EN61000-6-2 and EN60950-1)

- AGP3500-S1-AF-D81K/D81C
- AGP3500-T1-AF-D81K/D81C
- AGP3600-T1-AF-D81K/D81C

INQUIRY

Do you have any questions about difficulties with your GP?

Please access our site anytime that you need help with a solution.

<http://www.pro-face.com/otasuke/>

Note

Please be aware that Digital Electronics Corporation shall not be held liable by the user for any damages, losses, or third party claims arising from the uses of this product.

Digital Electronics Corporation

8-2-52 Nanko-higashi
Suminoe-ku, Osaka 559-0031
JAPAN

TEL: +81-(0)6-6613-3116

FAX: +81-(0)6-6613-5888

<http://www.proface.com>

© Copyright 2006 Digital Electronics Corporation. All rights reserved.