



Thank you for purchasing the OMRON E5AN Digital Controller. This manual describes the functions, performance, and application methods needed for optimum use of the product.

OMRON Corporation ©All Rights Reserved

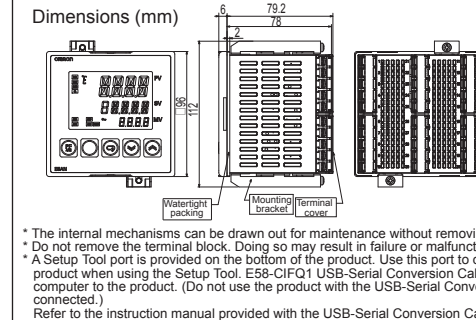
For detailed operating instructions, please refer to the E5CN/E5AN/E5EN/E5GN Digital Controllers User's Manual Basic Type (Cat. No. H156).

Significance of WARNINGS and CAUTIONS

Key to Warning Symbols: Indicates a potentially hazardous situation which, if not avoided, is likely to result in minor or moderate injury or property damage.

Wiring AN1 2200774-7C

Dimensions



Warning Symbols CAUTION

Do not touch the terminals while power is being supplied. Doing so may occasionally result in minor injury due to electric shock. Do not allow pieces of metal, wire clippings, or fine metallic shavings or filings from installation to enter the product.

Suitability for Use: OMRON shall not be responsible for conformity with any standards, codes, or regulations that apply to the combination of the products in the customer's application or use of the product.

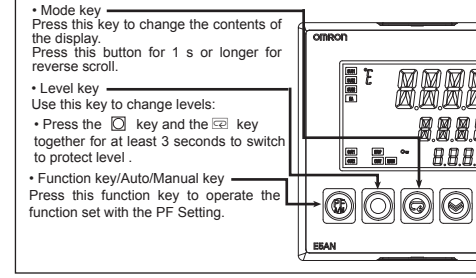
Precautions for Safe Use

- Be sure to observe the following precautions to prevent operation failure, malfunction, or adverse effects on the performance and functions of the product. Do not use the product outdoors. Do not use or store the product in any of the following locations.

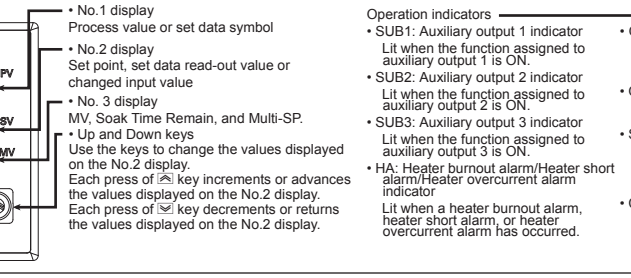
Specifications

Table with 2 columns: Specification Name and Value. Includes Power supply voltage, Operating voltage range, Power consumption, Indication accuracy, Event input, Control output 1, Control output 2, External power supply for ES1B Control method, Ambient temperature, Ambient humidity, Storage temperature, Altitude, Recommended fuse, Weight, Degree of protection, Installation environment, Memory protection, Transfer output.

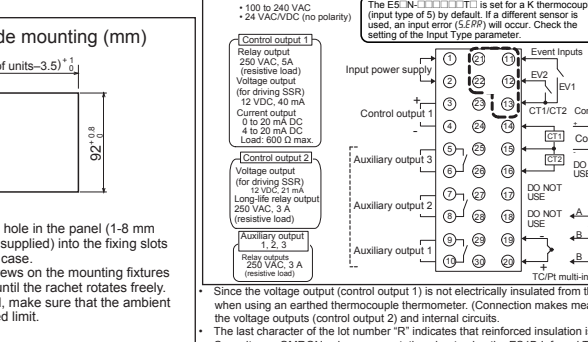
Names of parts on front panel



Installation



Connections



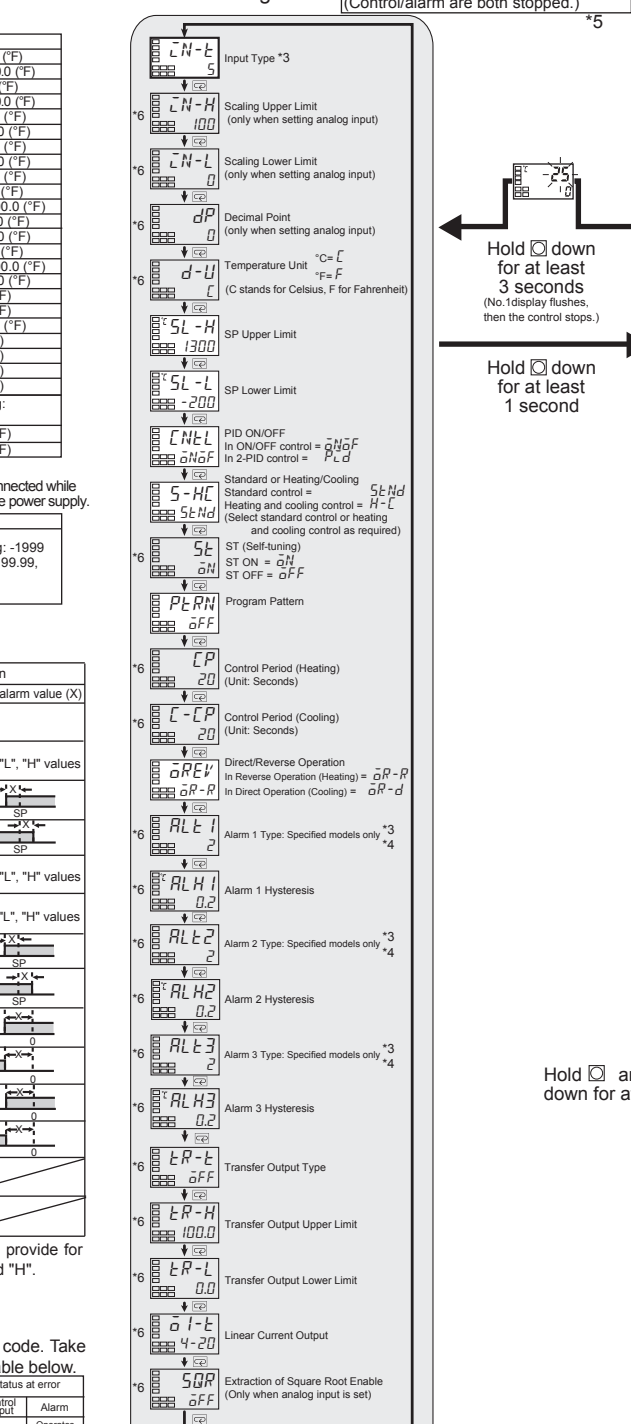
Conformance to EN/IEC Standards

This is a class A product. In residential areas it may cause radio interference, in which case the user may be required to take adequate measures to reduce interference.

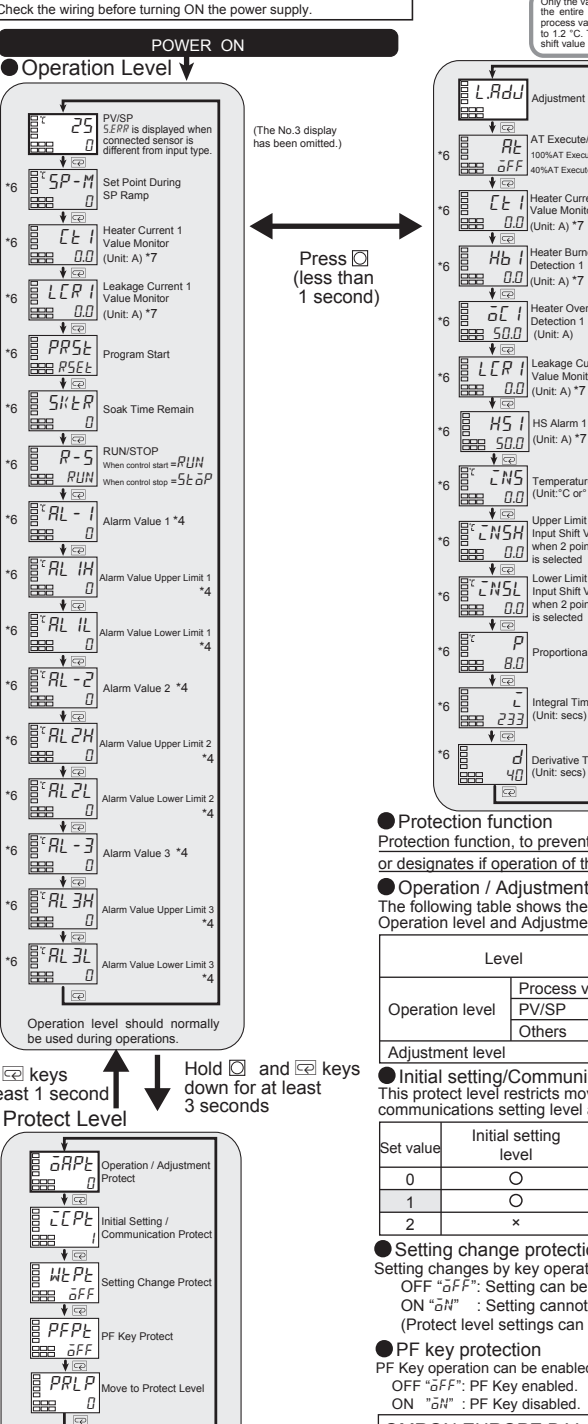
Operation menu

Table for Input Type: Platinum resistance thermometer, Thermocouple, Infrared Thermosensor ES1B, Analog input. Lists input types, settings, and ranges.

Initial Setting Level



Adjustment Level



Conformance to Safety Standards

Reinforced insulation is provided between input power supply, relay outputs, and between other terminals.

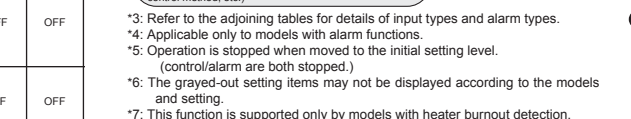
Alarms

Table for Alarms: Setting, Alarm type, Alarm output function. Lists 13 different alarm types and their functions.

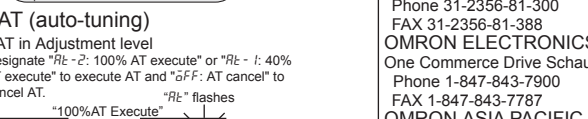
Error display (troubleshooting)

Table for Error display: No.1 display, Meaning, Action, Status at error. Lists error codes like SEPR, E333, and E111.

Protect Level



AT (auto-tuning)



Protection function

Table for Protection function: Level, Set value, Operation level, Adjustment level. Shows how protection levels affect settings.

Setting change protection

Table for Setting change protection: Setting, Initial setting level, Communications setting level, Advanced function setting level. Shows how protection levels affect setting changes.

PF key protection

PF Key operation can be enabled or disabled. OFF 'OFF': PF Key enabled. ON 'ON': PF Key disabled.

OMRON EUROPE B.V.

Wegalaan 67-69, NL-2132 JD Hoofddorp The Netherlands. Phone 31-2356-81-300. FAX 31-2356-81-388.