

OMRON

形 EE-SPX301/401 EE-SPY30/40

アンブ内蔵フォト・マイクロセンサ

取扱説明書

このたびは、本製品をお買い上げいただきまして、まことにありがとうございます。

オムロン株式会社

© OMRON Corporation 2008-2010 All Rights Reserved.

安全上のご注意

警告表示の意味

警告 正しい取扱いをしなれば、この危険のために、軽傷・中程度の傷害を負ったり、万一の場合には重傷や死亡にいたる恐れがあります。

警告 安全を確保する目的で直接的または間接的に人体を検出する用途に本製品は使用できません。

安全上の要点

- 電源電圧について 仕様電圧範囲を超えて使用しないでください。仕様電圧範囲以上の電圧を印加したり、交流電源を印加すると、破損したり焼損する恐れがあります。

使用上のご注意

- 反射形アンブ内蔵フォトマイクロセンサ形EE-SPYの検出可能距離は製品個々により8～20mm(反射率90%の白色紙)程度バラツキます。

OMRON

Model EE-SPX301/401 EE-SPY30/40

Built-in Amplifier Photomicrosensor

INSTRUCTION SHEET

Thank you for selecting OMRON product. This sheet primarily describes precautions required in installing and operating the product.

Before operating the product, read the sheet thoroughly to acquire sufficient knowledge of the product. For your convenience, keep the sheet at your disposal.

TRACEABILITY INFORMATION: Representative in EU: OMRON Corporation, Shiohji Horikawa, Shimogyo-ku, Kyoto 600-8530 JAPAN

The following notice applies only to products that carry the CE mark: Notice: This is a class A product. In residential areas it may cause radio interference.

© OMRON Corporation 2008-2010 All Rights Reserved.

PRECAUTIONS ON SAFETY

Meanings of Signal Words

WARNING Indicates a potentially hazardous situation which, if not avoided, will result in minor or moderate injury, or may result in serious injury or death.

WARNING

This product is not designed to be used either directly or indirectly in applications that detect human presence for the purpose of maintaining safety.

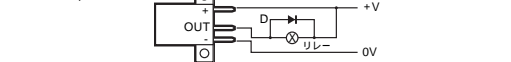
PRECAUTIONS FOR SAFE USE

- Power Supply Voltage Do not exceed the voltage range indicated in the specifications. Applying a voltage exceeding the specifications or using an AC power supply may result in rupture or burning.

PRECAUTIONS FOR CORRECT USE

- Installation The sensing distance for the EE-SPY Reflective-type Photomicrosensor with built-in amplifier varies from 8 to 20 mm depending on the product (90% reflective white paper).

- フォトマイクロセンサをねじ締め付けて固定する場合はM3ねじを使用してください(ネジの緩み防止のためパネ座金を合わせて使用してください)。

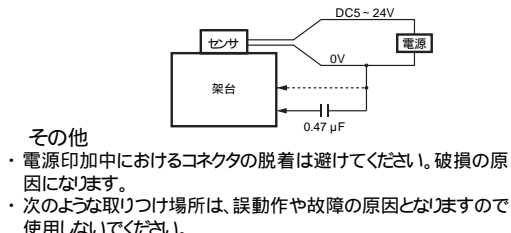


- 電源について 市販のスイッチングレギュレーターを使用する際は、スイッチングノイズにより誤動作することがあります。

- 設計時 コード延長について コードは導体断面積0.3mm²以上の電線を用い1メートルで2m以下としてください。



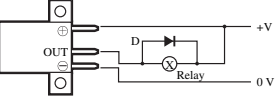
- コンデンサを入れる場合でも、本製品に接続する電源ケーブルは10m未満にしてください。



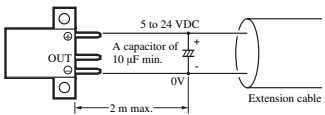
- その他 電源印加中におけるコネクタの着脱は避けてください。

- Mount the Sensors securely on a flat surface. Mount the Sensor with two M3 screws, using a spring washer to ensure the screws will not become loose.

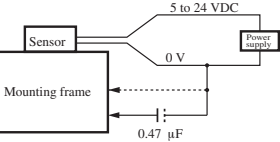
- When driving a small inductive load, such as a relay, wire as shown below.



- Separate the wiring for the Sensor from high-tension lines or power lines. When extending the cable, use an extension cable with conductors having a total cross-section area of 0.3 mm².

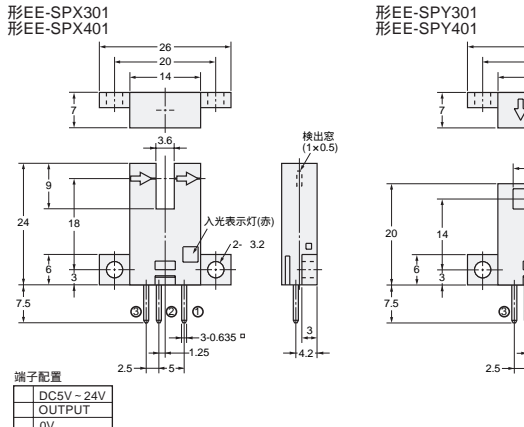


- When there is inductive noise in the Sensor mounting frame (metal), the output of the Sensor may be affected.



- Other Precautions Do not disconnect the Connector from the Sensor when power is supplied to the Sensor.

外形寸法

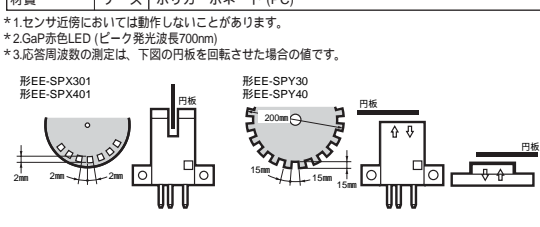


入出力回路図

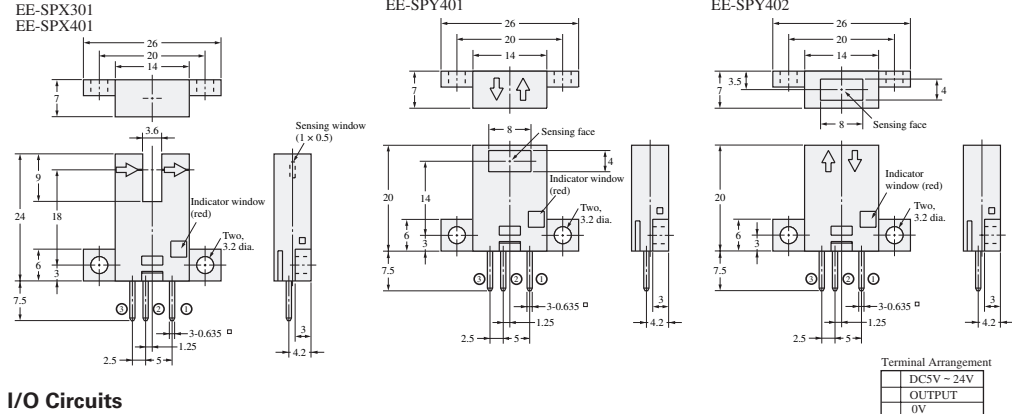
Table with columns: 形式, 動作モード, タイムチャート, 出力回路. It details the electrical characteristics and timing for different sensor models.

定格・性能

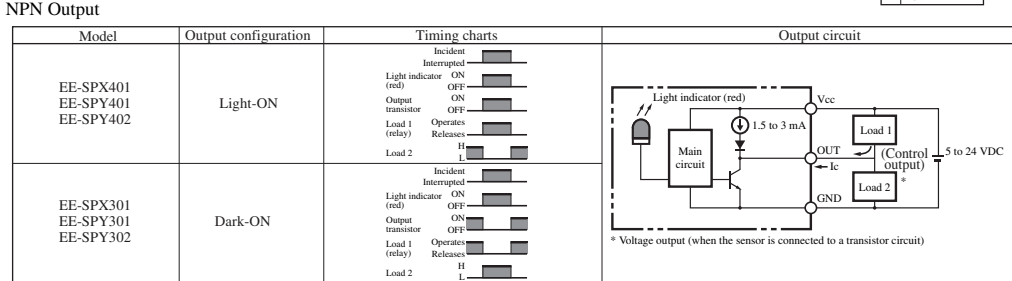
Table listing specifications such as 検出方式, 検出距離, 標準検出物体, 応答, 表示灯, 電源電圧, 消費電流, 制御出力, etc.



Dimensions

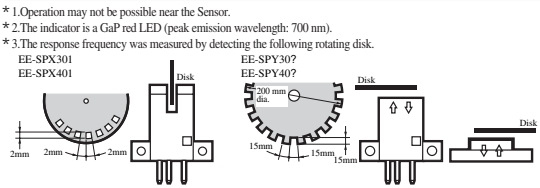


I/O Circuits



Ratings/Characteristics

Table listing performance characteristics such as Sensing method, Sensing distance, Sensing object, Light source, Supply voltage, Current consumption, etc.



Suitability for Use

THE PRODUCTS CONTAINED IN THIS SHEET ARE NOT SAFETY RATED. THEY ARE NOT DESIGNED OR RATED FOR ENSURING SAFETY OF PERSONS.

OMRON shall not be responsible for conformity with any standards, codes, or regulations that apply to the combination of the products in the customer's application or use of the product.

Take all necessary steps to determine the suitability of the product for the systems, machines, and equipment with which it will be used.

NEVER USE THE PRODUCTS FOR AN APPLICATION INVOLVING SERIOUS RISK TO LIFE OR PROPERTY WITHOUT ENSURING THAT THE SYSTEM AS A WHOLE HAS BEEN DESIGNED TO ADDRESS THE RISKS.

- EUROPE OMRON EUROPE B.V. Sensor Business Unit Carl-Benz Str.4, D-71154 Nufringen Germany